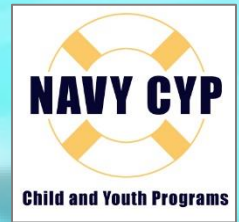


**ALOHA AND WELCOME TO
YOUR NEW HOMEPORT,
JOINT BASE PEARL
HARBOR-HICKAM!**



Hawaii School Information School Year 2021-2022

**JBPHH Child and Youth Programs
School Liaison Office**

530 Peltier Ave. Bldg. 1925

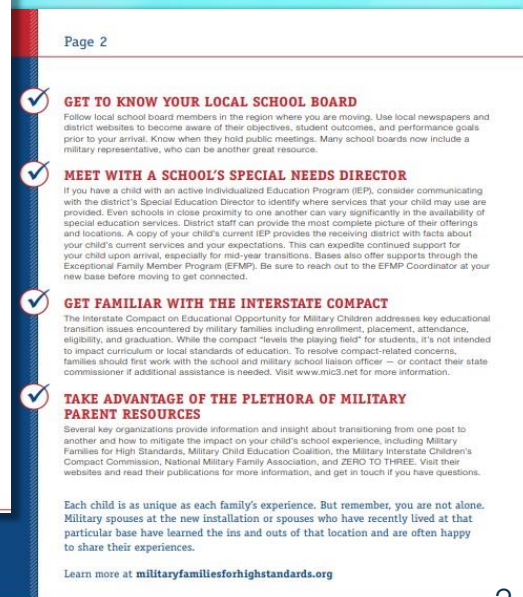
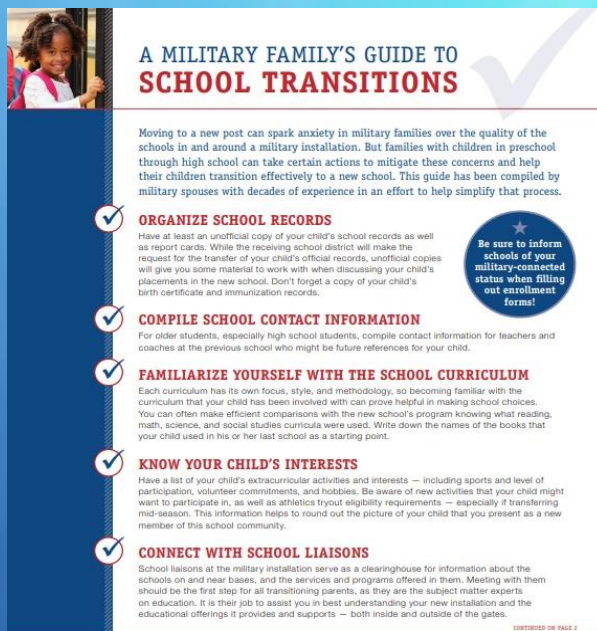
Honolulu, HI 96818

808- 306-9247

Email: JBPHHSLO@navy.mil

Planning for Your Child's Educational Needs

- Checklist for school moves
- Know your child's needs, interests
- Update / speak with the local school liaison officer
- All records-birth certificate/current report card/testing information
- Individualized Education Plan (IEP) or 504 Plan
- Gifted and talented-Testing Information
- Prepare educational binder with all information



Initial Required Paperwork to Enroll



Birth Certificate

Medical Records, including:

- **Updated Immunizations**

(For immunizations required by Hawaii Department of Health to attend school visit, <https://health.hawaii.gov/docd/vaccines-immunizations/school-health-requirements/sy-20-21>)

- **TB Clearance**

(Navy Medical Immunizations can be reached at (808) 473-1880 x 92323. For the 15th Medical Group Immunizations can be reached at (808) 448-6275. If you are new to Hawaii, please change regions first with TRICARE / Health Net. For questions regarding TRICARE / Health Net, please call 1-844-866-9378.)

- **Physical Examination within a year of entering school**

(Students without a current physical may start school with a documented appointment date. For Air Force, contact the 15th Medical Group at (808) 448-6000. For Navy contact the Makalapa Medical Clinic at (808) 473-1880 to schedule an appointment and for additional information.)

Documentation of Lodging

Report cards/records from previous school

IEP or 504 Plan

School Placement-Temporary Lodging **vs** Permanent

While you are staying in temporary lodging, there are designated schools for your child until your family receives permanent housing. Choose your home wisely; your child will be assigned to a school based on the street you live on. If you move to a house that is located in a different zone than your temporary lodging, your child will be assigned to a different school. The temporary schools do not have space to accommodate students outside their zoned area all year long. Geographic Exceptions (GE) to attend a different school are rarely granted.

Temporary Lodging	Elementary School	Middle School	High School
Tripler Guest House	Moanalua	Moanalua	Moanalua
Best Wester Plaza or Airport Honolulu	Nimitz	Aliamanu	Radford
Hale Koa Hotel or others in Waikiki	Jefferson	Washington	Kaimuki
NGIS Royal Alakai	Hickam	Aliamanu	Radford
Navy Lodge Pearl Harbor/Ford Island	Pearl Harbor Kai	Aliamanu	Radford
Housing	Elementary School	Middle School	High School
Camp Stover	Wheeler	Wheeler	Leilehua
Catlin Park	Nimitz	Aliamanu	Radford
Doris Miller	Aliamanu	Aliamanu	Radford
Ford Island	Pearl Harbor Kai	Aliamanu	Radford
Halawa	Aiea	Aiea	Aiea
Hale Ali'i	Pearl Harbor Kai	Aliamanu	Radford
Hale Moku	Pearl Harbor Kai	Aliamanu	Radford
Halsey Terrace	Aliamanu	Aliamanu	Radford
Hokulani	Pearl Harbor Kai	Aliamanu	Radford
Hospital Point	Pearl Harbor Kai	Aliamanu	Radford
Makalapa	Makalapa	Aliamanu	Radford
Maleolap	Aliamanu	Aliamanu	Radford
Manana	Pearl City	Highlands	Pearl City
Marine Barracks	Pearl Harbor Kai	Aliamanu	Radford
McGrew Point	Alvah Scott	Aiea	Aiea
NCTAMS	Helemano	Wahiawa	Leilehua
Pearl City Peninsula	Lehua	Highlands	Pearl City
Radford Terrace	Shafter	Moanalua	Moanalua
Red Hill	Red Hill	Moanalua	Moanalua
Moanalua Terrace (Asher, Cakon, Clarey, Flaherty, Moreell, Pharis, Scott, Taylor, Thomas, Tomich, Warden)	Aliamanu	Aliamanu	Radford
Moanalua Terrace (Bennion, Fuqua, Jones, Kidd, McMorris, Reeves, Ross)	Pearl Harbor	Aliamanu	Radford
Earhart Village	Nimitz	Aliamanu	Radford
Earhart Village Park	Mokulele	Aliamanu	Radford
Hale Na Koa I	Mokulele	Aliamanu	Radford
Hale Na Koa II	Hickam/Mokulele	Aliamanu	Radford
Onizuka/Officer Field	Hickam	Aliamanu	Radford
Camp Smith	Webbing	Aiea	Aiea

Before/After School Care and Pre-Schools

Navy Child and Youth Programs

Navy CYP Hawaii offers quality programs for eligible children and youth ages 6 weeks -18 years of age. Our centers are located on JBPHH, NCTAMS on Installation and off base in Navy Housing. We have the following programs available:

Child Development Centers (CDC)

Offering full-day, part-day, and hourly care for ages 6 weeks-5 years old

Locations include Center Drive CDC, Ford Island CDC, Hickam Harbor CDC, Hickam Main CDC, Hickam West CDC, Kids Cove (24/7), Peltier CDC, Pier Side CDC, Wahiawa Annex CDC

To sign up for childcare please visit www.militarychildcare.com to create an account.

Child Development Homes (CDH)

Program that allows authorized family members to provide childcare in their government quarters to children ages 4 weeks-12 years of age. All personnel providing childcare in their government quarters must be certified with the CDH program.

JBPHH: (808) 471-8445

To sign up for childcare please visit www.militarychildcare.com to create an account.

School Age Centers (SAC)

SAC meets the needs of parents requiring child care on a daily basis for children grades K-6, such as before and/or after school programs, full-day programs (when school is not in session), and camps for extended school breaks.

Locations include Catlin School Age and Hickam School Age

To sign up for childcare please visit www.militarychildcare.com to create an account.

Youth Sports and Fitness

Youth Sports and Fitness offers a wide range of team and individual sports in a safe environment throughout the year and sports camps during school breaks.

JBPHH: (808) 473-0789

Teen Center

The open recreation Teen Centers provide activities for youth typically in grades 7-12. Youth have access to BGCA and 4H programs, field trips, special events, camps, scholarships, and more.

JBPHH: (808) 448-1068

Other Child Care Options

A+ Program

Students in the Department's After-School Plus (A+) Program are given time to complete homework and participate in enrichment and physical activities such as arts, crafts, drama, dance, sports and games. The monthly enrollment fee is \$120 per child, with subsidies available for qualified participants. The A+ Parent Handbook includes more information about the program. For questions about the program, contact your elementary school office or A+ program coordinator.

Program Contact: Jenna Pak, 808-305-0692, jenna_pak@hawaiidoe.org

For more information: <https://www.kamaainakids.com/school-age/program>

YMCA Afterschool Enrichment on Pearl Harbor

After School Enrichment is designed for military children at the elementary level who may benefit from a fun, hands-on, multisensory learning approach in core subjects such as, language arts, science, and math. Each lesson is aligned with core subjects to foster additional emphasis in subjects currently taking place in the classroom and are tailored to each participant's ability. Curriculum is developed for a small group environment and taught by qualified teachers. After School Enrichment, subject matters are offered on a rotating basis.

Program Contact: (808) 473-3398

For more information: <https://808youth.com/content/afterschool-enrichment>

PATCH Hawaii

Childcare resource and referral (CCR&R) agencies, like PATCH are located throughout the country. CCR&R services have evolved from grassroot efforts to help parents find childcare, to well-developed systems that support parents, providers, and local communities in finding, planning for, and providing quality child care. PATCH is the only Hawaii member of the Child Care Aware National Association of Child Care Resource and Referral Agencies (NACCRA)

Program Contact: (808) 839-1988, patch@patch-hi.org

Home, Charter and Private Schools

Charter

<http://www.hawaiipublicschools.org/TeachingAndLearning/EducationInnovation/CharterSchools/Pages/home.aspx>

Private

<https://www.hais.us.families>

Military Discounts
Scholarships/Work Study

<http://www.honolulumagazine.com/Hawaii-Private-School-Guide/August-2019/Hawaiis-Private-Schools-Offer-a-Variety-of-Settings-Experiences-and-Opportunities/>

Homeschool

<http://www.hawaiipublicschools.org/ParentsAndStudents/EnrollingInSchool/Choosingaschool/Pages/Homeschooling-FAQs.aspx>

9-12 grades must be in an accredited program if there is any desire for high schooler to return to public school.

Transition Support in Schools and Navy CYP

Transition Centers

Parent Community Network Centers Coordinators (PCNC)/Transition Coordinators (TC) in schools

Anchord4Life

Youth to Youth Welcomes & Tours

Military Family Life Consultants (MFLC)

Lunch Bunch/Lunch Buddy Programs

Youth Sponsorship Program in Navy CYP for SAC and Teen Programs

Did You Know?

- ✈️ Hawaii DOE uses Common Core Standards
- ✈️ IEP and Gate programs will be provided if documentations is provided – equivalent accommodation. “Equivalent” program does not mean the “exact same”
- ✈️ Geographic Exceptions require both principals agreement
- ✈️ No before school programs in the public schools
- ✈️ Kindergarten entry age is 5 years old by 7/31
- ✈️ Bus transportation roundtrip costs \$576 annually - quarterly payments available
- ✈️ Impact Aid Federal Survey Cards give federal funding to public schools that are lost because of “tax free” federal properties. One survey card is needed for each child, not per family. Impact Aid gives around \$1,576 per child back to the public school system.
- ✈️ Schools start the first week of August

For more FAQ's please visit,

<http://www.hawaiipublicschools.org/ParentsAndStudents/MilitaryFamilies/Pages/FAQs-for-military-families.aspx>



Contacts and Useful Websites

Hawaii Department of Education (HI DOE)	
Central District Office	(808) 831-6852
Leeward District Office	(808) 692-8000
Honolulu District Office	(808) 733-4952
Windward District Office	(808) 233-5700
Comprehensive Student Support Services	(808) 308-9787
Joint Base Pearl Harbor-Hickam	www.greatlifehawaii.com
Hawaii Department of Education	www.hawaiipublicschools.org
Hawaii Private Schools	www.hais.org
Tutor.com	www.tutor.com/military
March 2 Success	www.march2success.com/index.cfm
Military Bases in Hawaii	www.himilitary.com
Military Kids Connect	www.militarykidsconnect.dcoe.mil
Interstate Compact (MIC3)	www.mic3.net
Military One Source	www.militaryonesource.mil
KHAN Academy	www.khanacademy.org
Catholic Schools Hawaii	www.catholicschoolshawaii.org
FOCUS (Families Overcoming Under Stress)	www.focusproject.org
Special Parent Information Network Hawaii	www.spinhawaii.org/Resources/advocacy.html
Leadership in Disabilities & Achievement Hawaii	www.ldahawaii.org
Pacer Center, Champions for Children with Disabilities	www.pacer.org
Military School Liaison Officers – All Branches	www.dodea.edu/Partnerships/schoolLiaisonofficer.cfm
HSLDA Hawaii (Homeschooling)	https://hslda.org/legal/hawaii



State of Hawaii – Department of Education
2021-2022 OFFICIAL SCHOOL CALENDAR

Teachers' Work Year - 1st Semester: July 28, 2021 - January 3, 2022; 2nd Semester: January 4, 2022 - May 30, 2022
Students' Work Year - 1st Semester: August 3, 2021 - December 17, 2021; 2nd Semester: January 4, 2022 - May 26, 2022

Student Teacher			Su	M	T	W	Th	F	Sa		
Week	Days	Days									
			July 2021							1st SEMESTER - 89 Student Days (Ends December 17)	
1	0	3	18	19	20	21	22	23	24	July 28: Teachers' First Day	
2	4	8	25	26	27	28	29	30	31	July 28-August 2: Teacher Work Days (no students)	
3	9	13	August							August 3: Students' First Day	
4	13	17	1	2	3	4	5	6	7	August 20: Statehood Day	
5	18	22	8	9	10	11	12	13	14		
6	23	27	15	16	17	18	19	20	21		
7	27	31	22	23	24	25	26	27	28		
8	32	36	29	30	31	1	2	3	4		
9	37	41	5	6	7	8	9	10	11	September 6: Labor Day	
10	42	46	12	13	14	15	16	17	18		
11	47	51	19	20	21	22	23	24	25		
12			26	27	28	29	30	1	2		
13	52	56	3	4	5	6	7	8	9		
14	57	61	October							October 11-15: Fall Break***	
15	62	66	10	11	12	13	14	15	16		
16	66	70	17	18	19	20	21	22	23		
17	71	75	24	25	26	27	28	29	30		
18	74	78	31	1	2	3	4	5	6		
19	79	83	7	8	9	10	11	12	13	November 11: Veterans Day	
20	84	88	14	15	16	17	18	19	20	November 25: Thanksgiving	
21	89	93	21	22	23	24	25	26	27	November 26: School Holiday	
22			28	29	30	1	2	3	4		
23			5	6	7	8	9	10	11		
24	93	98	12	13	14	15	16	17	18	December 20-December 31: Winter Break***	
25	98	103	19	20	21	22	23	24	25		
26	102	107	26	27	28	29	30	31	1	2nd SEMESTER - 93 Student Days (Ends May 26)	
27	107	112	2	3	4	5	6	7	8	December 24: Christmas (observed)	
28	112	117	9	10	11	12	13	14	15	December 31: New Year's Day (observed)	
29	116	122	16	17	18	19	20	21	22	January 3: Teacher Workday (no students)*	
30	121	127	23	24	25	26	27	28	29	January 17: Dr. Martin Luther King Jr. Day	
31	125	131	30	31	1	2	3	4	5		
32	130	136	6	7	8	9	10	11	12	Institute Day (one day with no students during the week.	
33	135	141	13	14	15	16	17	18	19	Date for each island TBD.)	
34			20	21	22	23	24	25	26	February 21: Presidents' Day	
35	139	145	27	28	1	2	3	4	5		
36	144	150	6	7	8	9	10	11	12		
37	149	155	13	14	15	16	17	18	19		
38	153	159	20	21	22	23	24	25	26		
39	158	164	March								
40	163	169	27	28	1	2	3	4	5		
41	168	174	6	7	8	9	10	11	12		
42	173	179	13	14	15	16	17	18	19	March 14-18: Spring Break***	
43	178	184	20	21	22	23	24	25	26	March 25: Kuhio Day (observed)	
44	182	189	27	28	29	30	31	1	2		
45	182	189	3	4	5	6	7	8	9		
			10	11	12	13	14	15	16	April 15: Good Friday	
			17	18	19	20	21	22	23		
			24	25	26	27	28	29	30		
			May								
			1	2	3	4	5	6	7		
			8	9	10	11	12	13	14		
			15	16	17	18	19	20	21	May 26: Last Day for Students & Second Semester Ends**	
			22	23	24	25	26	27	28	May 27: Last Day for Teachers	
			June							May 30: Memorial Day	
			29	30	31	1	2	3	4		
	-2 ^A	+1 ^{A,A}									
	180	190									

Approved November 19, 2020

OFFICIAL STATE HOLIDAYS: 2021-2022 SCHOOL YEAR

^A2 Instructional days shall be converted to a non-student day for school planning and collaboration.

^{A,A}The employer may assign up to 6 additional hours, in half hour blocks (an "equivalent day") for training and meetings beyond the teacher's regular work day.

Statehood Day:	August 20, 2021	New Year's Day (obs.):	December 31, 2021
Labor Day:	September 6, 2021	Dr. Martin Luther King Jr. Day:	January 17, 2022
Veterans Day:	November 11, 2021	Presidents' Day:	February 21, 2022
Thanksgiving Day:	November 25, 2021	Prince Jonah Kūhio Kalanianaʻōle Day (obs.):	March 25, 2022
Christmas Day (obs.):	December 24, 2021	Good Friday:	April 15, 2022
		Memorial Day:	May 30, 2022

*Teacher work day between semesters: January 3 **Commencement exercises: No sooner than May 20, 2022

***For 10-month teachers - Intersession: Oct. 11-15; Recesses: Dec.20-Dec.31 & March 14-18

Educational Officer & Teacher Institute Days: TBD (one day per island)