

The Kokua Bulletin

EFMP Exceptional
Family Member
Program

JUNE 2025

ALOHA EFMP 'OHANA!

Happy June EFMP families! Get your sunscreen on and get ready for summer. June marks the beginning of Hurricane Season. Make sure you update your NFAAS information so your EFM's needs can be supported in the event of a Hurricane or any other emergency situation. Be prepared by having important information, medication and supplies that your EFM will need to endure a hurricane emergency.

JBPHH offers continuous support with a range of services and classes that assist with employment readiness, relationships, parenting, family support and more. For a full menu of options and to register, check out our website at greatlifehawaii.com!

IN THIS ISSUE:

- EFMP Overview
- Digital Digest
- EFMP & Me Tool
- Respite Care
- Oahu Events
- Resources
- EFMP Trainings
- MFSC Classes
- EFMP Contact List

HURRICANE PREPAREDNESS



MAKE A PLAN



BUILD A KIT



STAY INFORMED

EFMP Overview

New to the Program? Do you have more Questions? Learn more about how the EFMP can assist your family. EFMP is an assignment tool that provides support to military families with special needs, such as:

- Collaboration between military & civilian agencies for personnel support
- Coordination of medical, educational & community support
- Information & Referral services

The one-hour long class provides a brief overview of the EFMP, specific to JBPHH. Come learn about what to expect after the initial enrollment process and the next steps to obtain services and resources in support of your family. Open to **ALL** branches.

When: First Wednesday of Every Month (June 4, 2025) at 9:00 a.m.

Where: Virtually & In-Person at the MFSC

Register: <https://jbphh.greatlifehawaii.com/support/military-family-support-center/exceptional-family-member-program-efmp>



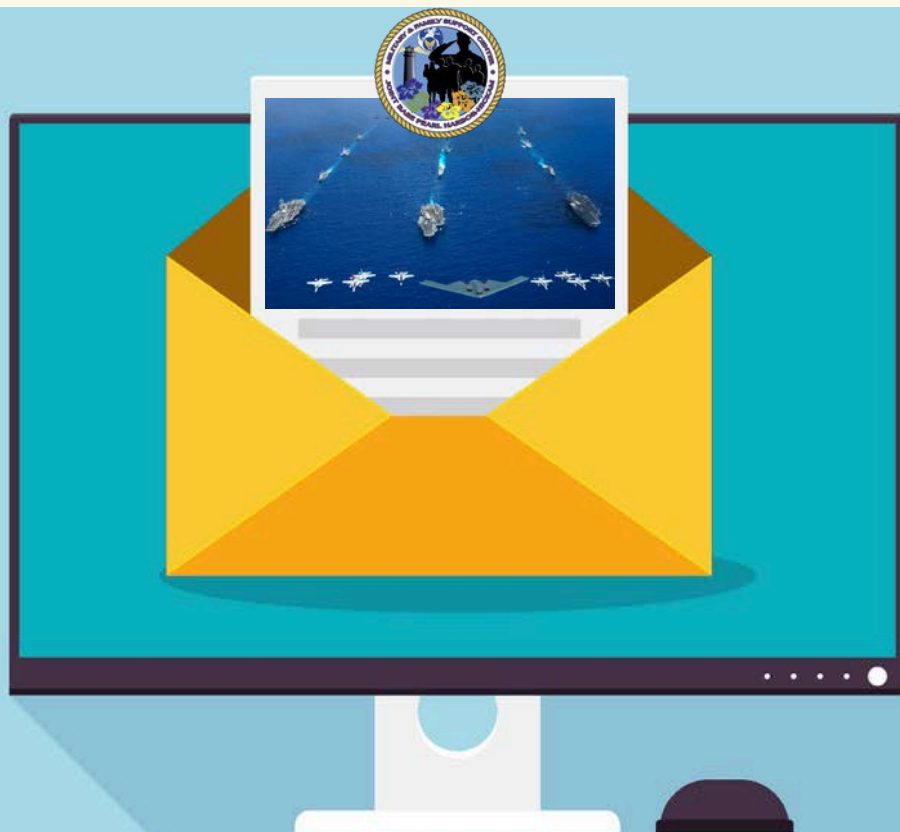
JBPHH EFMP Digital Digest

We are excited to introduce a new *digital* format that aims to empower and assist in navigating the world of exceptional family support. Our aim is to connect you with information & resources that cater to your unique needs and serve as valuable assets in the well-being and empowerment of your family members.

This month's topic: Deployment Support.

Military OneSource offers free, around-the-clock support to help military families navigate all stages of deployment. Resources include pre-deployment planning, confidential counseling, parenting support, and tips for staying connected during separation. Families also receive guidance for a smooth reintegration when service members return home, helping them stay resilient throughout the entire process.

<https://www.militaryonesource.mil/deployment/pre-deployment/deployment-resources-for-families/>

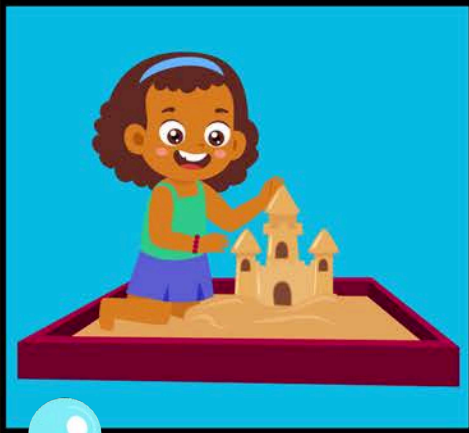


Exceptional Family Member Program

Sensational Summer Sensory Event



3RD
ANNUAL
EVENT!



Invigorate your child's senses with a day of sensory fun!

June 7
9:00 am - 1:00 pm

Sponsored by the MFSC in partnership with local community agencies
Open to all DoD ID cardholders & their sponsored guests.
Event schedule is subject to change without notice.



EFMP Exceptional Family Member Program



Military & Family Support Center
4827 Bougainville Drive
Honolulu, HI 96818
808-474-1999 | mfschawaii@us.navy.mil





EFMP

Exceptional
Family Member
Program



**ANCHORED
TOGETHER**

**Where: Hickam Field of Dreams
Playground**

**When: First Monday of the month at
9:00 a.m. & last Wednesday of the
month at 2:00 p.m.**

**Join us for fun, connection, and
support! This event is designed to give
children a chance to play in an all abilities
environment, while offering
caregivers the opportunity to connect,
share resources, and support one
another.**

**Questions can be directed to Family
Support EFMP at (808) 474-1999 or
efmp-cnrh@us.navy.mil**



Respite Care

As a parent, caregiver or guardian of a person with special needs, it is important to ensure that you make time to care for yourself as well. Respite care provides short-term relief for primary caregivers and has flexible options. Care may be provided in the home, a facility, or adult day center. Other optional locations are schools, camps or a volunteer agency.

If eligible, Navy EFMP families may access respite care for children through Child Care Aware. Air Force families may contact Meesha Williams, EFMP Family Support Coordinator, at 808-449-0309.

Respite options for adults with special needs may be accessed through State programs or non-profit agencies. Payment assistance options can include Tricare Extended Health Care Option (ECHO) or Medicaid Waivers.

For more information:

ARCH National Respite Locator:

<https://archrespite.org/caregiver-resources/respitelocator/>

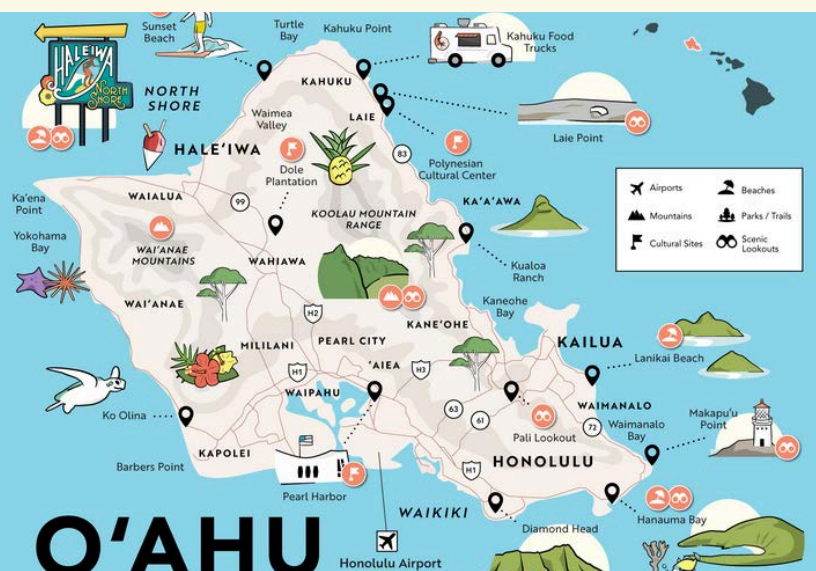
Child Care Aware:

<https://www.childcareaware.org/fee-assistancerespite/>



Oahu Events

- JUNE 2: ANCHORED TOGETHER - EFMP SUPPORT GROUP (HICKAM FIELD OF DREAMS PLAYGROUND)
- JUNE 7: EFMP SENSATIONAL SUMMER SENSORY EVENT (MILITARY & FAMILY SUPPORT CENTER)
- JUNE 13-15: THE PAN-PACIFIC FESTIVAL (WAIKIKI)
- JUNE 13: KING KAMEHAMEHA STATUE LEI DRAPING (ALI'ĪOLANI HALE)
- JUNE 14: KING KAMEHAMEHA CELEBRATION FLORAL PARADE ('IOLANI PALACE TO KAPI'OLANI PARK)
- JUNE 14: ARMY EFMP FAMILY FIELD DAY (SCHOFIELD BARRACKS)
- JUNE 25: ANCHORED TOGETHER - EFMP SUPPORT GROUP (HICKAM FIELD OF DREAMS PLAYGROUND)





EFMP Family Support

EFMP
family

FIELD DAY

4th Annual

CALLING ALL
EFMP FAMILIES!

SATURDAY, JUNE 14, 2025

10:00 a.m. – 2:00 p.m.

**Games, Crafts,
Relay Races,
Sensory-friendly
activities, and
more!**

Join us for a day of FUN,
connect with other EFMP
families, and create
lasting memories!

**FREE
Family Event,
Exclusively for
EFMP enrolled
Families**

Look for us behind the
Island Palms Communities
Leasing Office
3703 McMahon Rd.
Schofield Barracks

**FOR MORE INFORMATION
CALL 808-787-4227**

**OR MESSAGE US ON FACEBOOK AT:
EXCEPTIONAL FAMILIES HAWAII**



GADGET GALAXY

AGES
8-13

ATRC'S ASSISTIVE TECHNOLOGY CAMP



JUNE 21

JOIN US TO EXPLORE AT,
HAVE FUN AND MAKE NEW FRIENDS!

WINDWARD COMMUNITY COLLEGE
45-720 KEA'AHALA RD
KANE'OHE, HI 96744

REGISTER ONLINE:

[HTTPS://FORMS.OFFICE.COM/R/WMKMKBTZF](https://forms.office.com/R/WMKMKBTZF)



ACTIVITIES:

IPAD ACTIVITIES
ADAPTED ART
ORBEEZ STRESS BALLS
SCRATCH PROGRAMMING
AND MUCH MORE!

[HTTPS://ATRC.ORG/](https://atrc.org/) [INFO@ATRC.ORG](mailto:info@atrc.org) 808-532-7110

Resources

Family

- Hawaii Ohana Support Network:
<https://www.hawaiiohanasupportnetwork.org/>



School

- JBPHH School Liaison Officer: 808-306-9247
<https://jbphh.greatlifehawaii.com/family/school-liaison-office>
Email: jbphhslo@navy.mil

- Hawaii Family Engagement Center:
<https://cds.coe.hawaii.edu/hfec/>

- Hawaii Afterschool Alliance:
<https://www.hawaiiafterschoolalliance.org/>



Community

- Special Parent Information Network: <https://spinhawaii.org/>
- Military One Source: <https://www.militaryonesource.mil/>

Monthly Resource Highlight

- <https://www.ptsd.va.gov/understand/awareness/index.asp#:~:text=June%20is%20PTSD%20Awareness%20Month.>
- <https://www.alz.org/hawaii>
- <https://dravetfoundation.org/what-is-dravet-syndrome/>



MFSC Classes

**YOUR MFSC PERSONAL & FAMILY LIFE
EDUCATION TEAM OFFERS A VARIETY
OF LIFE SKILLS CLASSES!**

Topics Include:

Mind Body Mental Fitness: Stress Resilience

Parenting

Personal Growth

Anger Management

Communication

Managing Grief & Loss

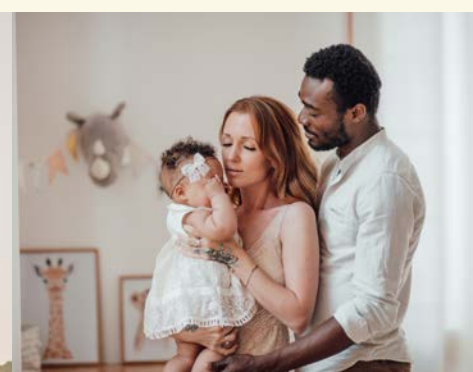
Interpersonal Relationships

And many more!

TO REGISTER: jbphh.greatlifehawaii.com/support



Scan to Register!



Navy EFMP Contacts

Navy EFMP Team

(808) 474-1999

efmp-cnrh@us.navy.mil

Military and Family Support Center

4827 Bougainville Drive

Honolulu, HI 96818

Nida LaLau

MTFC (Military Treatment Facility Coordinator)

(808) 473-2444 Opt. 9, EXT. 4525

nida.o.lalau.ctr@health.mil

Navy/SMART Clinic

1253 Makalapa Rd

JBPHH, HI 96853

***Completed DD 2792 forms are sent here for review/submission**

Overseas Screening Fleet Liaison

Patient Administration

(808) 473-2444 Opt. 9, EXT: 4514, 4524 or 4526

usn.jbphh.navhlthclinpearlhi.list.nhch-fleet-liaison@health.mil

Medical Readiness Clinic

1514 Makalapa Dr.

JBPHH, HI 96853

***Overseas Screening**

Cherise Yamasaki/Kimberly Meyer

School Liaisons

(808) 306-9247

JBPHHSLO@us.navy.mil

School Liaison Office

530 Peltier Ave. Bldg. 1925

Honolulu, HI 96818

***IEP/504 questions, specific school and educational requirement questions**

